

Integral Parts

Connectors	
straight	2
90° angle	2
Connecting sleeve	2
Clamping clips	3
Clamps	
Fixing clamps	3
Clamping clips	3
Multiple cable clamp	3
Distance clamp	3
Reducers	4
NH-conduit glands	
Clamping rings for conduit glands	5
O-rings for conduit glands	5
Clamping and sealing rings for conduit glands	6
Connecting thread socket	6
Cap nut PG 11	6
Blind plug	7
Single wire sealing	7
Sealing buffer	7
Sealing insertion	8
End caps	8
Rubber end sleeves	8

Errors and omissions excepted.

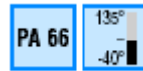


Connector straight/90° angle

black

Material:

Polyamide 66

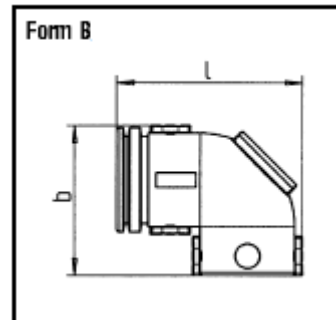
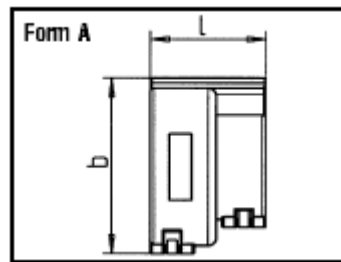


Maximum temperature:

240 h/150°C

Characteristics:

- outside gripping



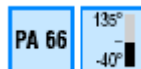
Connecting sleeve

NW 10 with clamping space

black

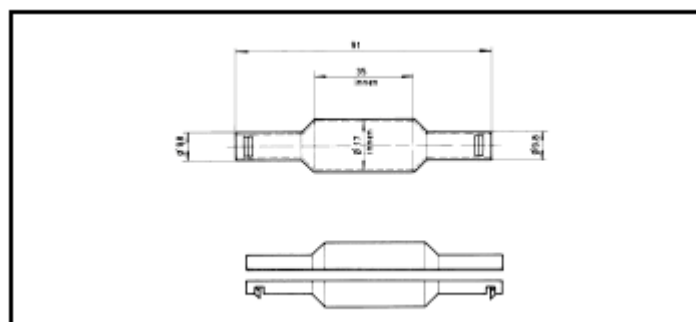
Material:

Polyamide 66



Maximum temperature:

>240 h/150°C





Clamping clips

black

Material:

Polyamide 66



Maximum temperature:

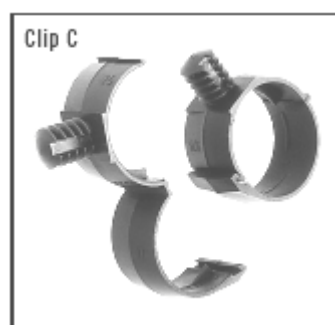
240 h/150°C

Characteristics:

- for flexible installation
- optimum connection for corrugated tubes

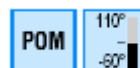
Application fields:

- to fix corrugated tubes or harness



Clamps

black



Material:

Polyacetalresin

Characteristics:

Burning behaviour accd. to UL 94 : HB

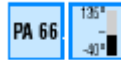




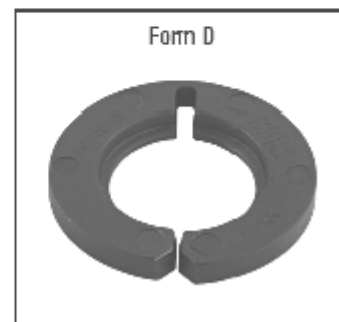
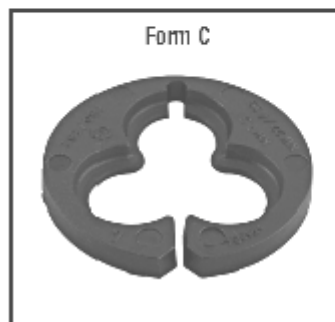
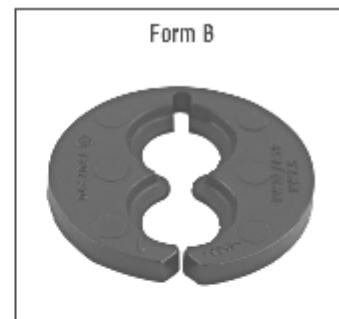
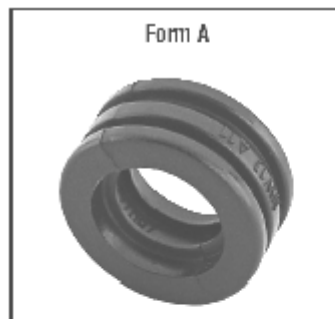
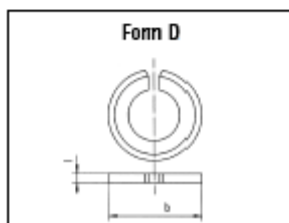
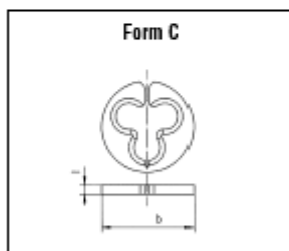
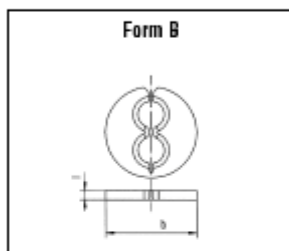
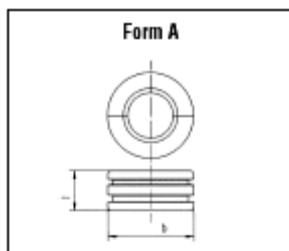
Reducers

black

Material:
Polyamide 66



Maximum temperature:
240 h/150°C



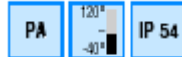


NH conduit glands

grey

Material:

Polyamide

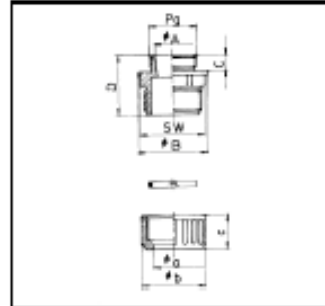


Features:

- Easy and tension proof mounting
- Unbreakable

Attention:

- incl. clamping ring
- Types without O-ring:
- Not according to ADR/GGVS rules
- Not Splash proof
- Not IP 54

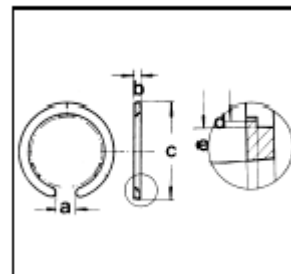


Clamping rings for NH Conduit glands

in connection with O-ring only

Material:

Acetal

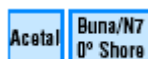


O-Rings

for NH Conduit glands

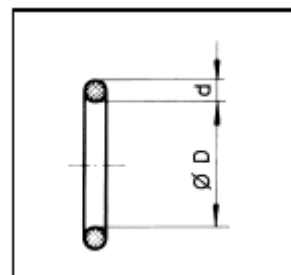
Material:

Acetal



Attention:

- accd. to ADR/GGVS
only with clamping ring



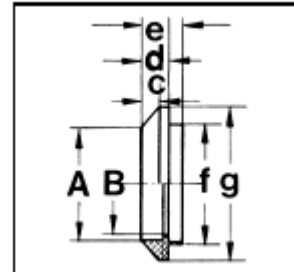


Clamping and sealing rings for NH Conduit glands

Material:
PVC-Cicron FI 68



Attention:
• Not suitable for NH-connector with locking



Connecting thread socket

Material:
brass, nickel plated

MS

Application fields:
• 2 x PG 11 for connection of corrugated tubes NW 10
or to connect it either to rear lamp or
corrugated tube NW 10



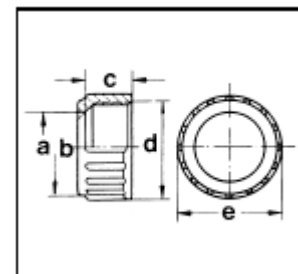
Cap nuts PG 11

closed, grey

Material:
Polyamide



Application fields:
• to close cable glands, (e.g. dust protection)

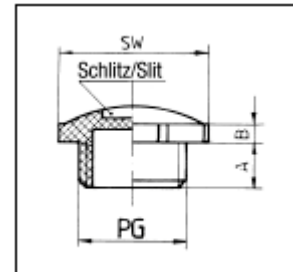
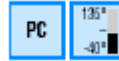




Blind plug grey

Material:
Polycarbonate

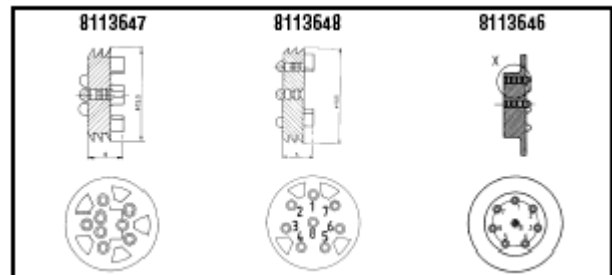
Application fields:
• to close cable glands, (e.g. dust protection)



Single wire sealing black

Material:
Neoprene

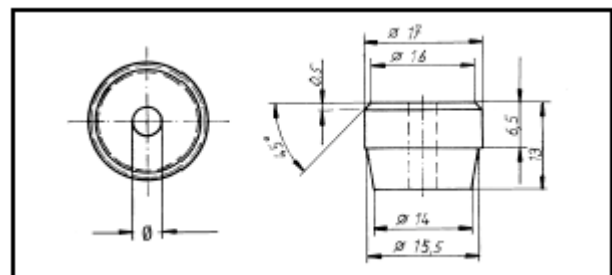
Application fields:
• Suitable for all cones and angle cones PG 11 and 5-pole pin and socket-jack box (8113648)
• For 8-pole plug in box (8113647)



Sealing buffer

Material:
Neoprene

Application fields:
• Suitable for all cones and angle cones PG 11 and 5-pole plug pin box for cable Ø 4.5/5.6 mm





Sealing insertion green

Material:

Soft-PVC Polyvinylchloride

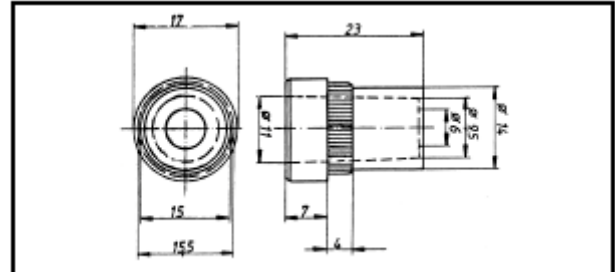


Features:

- Suitable for fuel junction box and for cable diameters from 7-10.5 mm

Application fields:

- Suitable for all cones and angle cones PG 11 and 5-pole plug pin box and tank junction box for cable Ø 7-10.5 mm



End cap black



Material:

Polyvinylchloride

Characteristics:

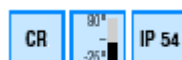
- Each to be cut open (each breakable) when required



Rubber end sleeve with traction relief black

Material:

Neoprene



Characteristics:

- with traction relief

